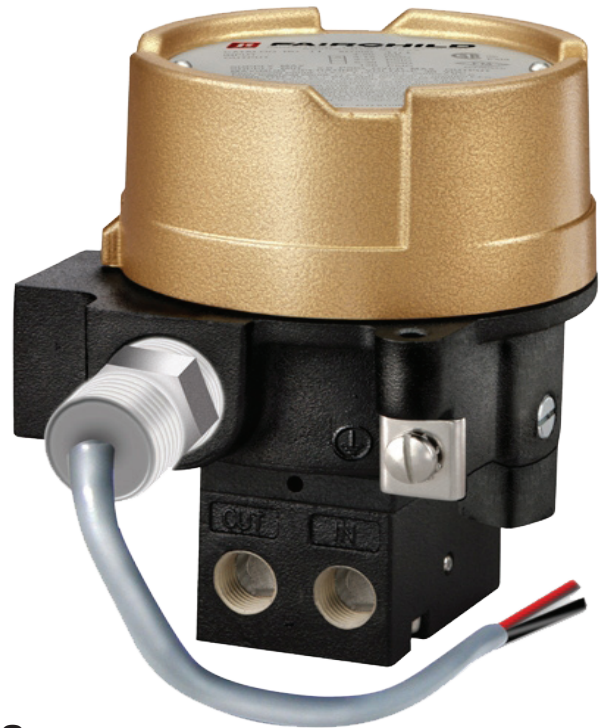


TO REDUCE
YOUR CARBON
FOOTPRINT
SELECT THE
FAIRCHILD
TXI7850
NATURAL GAS
TRANSDUCER

TXI7850 Explosion Proof Low Emission Transducer

When you need low emission yet reliable, stable, and quick operation, rely on Fairchild's TXI7850 **Low Emission** Transducer. Don't be fooled by competitive units that specify low emission ratings using "compressed air" or "midrange" values, but fail to specify natural gas media or full scale output ratings. The TXI7850 is specifically designed to meet and exceed the most stringent emission and carbon reduction restrictions with **natural gas!**



Features

- **Maximum** consumption rate of 3.6 SCFH for 3-15 psig output range*
- **Maximum** consumption rate of 5.5 SCFH for 6-30 psig output range*
- Moisture Resistant
- Field range-able & selectable

*Consumption rates are based on the specific gravity of natural gas (0.60).

rotork[®]
Fairchild

- **Lower** Emissions!
- **Faster** 2 Week Delivery!
- **Competitive** Pricing!
- **Faster** Technical Support!
- **Higher** Accuracy!
- **Longer** Two Year Warranty!
- **Fairchild** Name You Can Trust!

Specifications

Output Range	psig [BAR] (kPa)	3-15 [0.2-1.0] (20-100)	3-27 [0.2-1.8] (20-180)	6-30 [0.4-2.0] (40-200)
Supply Pressure^{1,2}	psig [BAR] (kPa)	20-120 [1.5-8.0] (150-800)	32-120 [2.2-8.0] (220-800)	35-120 [2.4-8.0] (240-800)
Minimum Span	psig [BAR] (kPa)	5 [0.35] (35)	10 [0.7] (70)	10 [0.7] (70)
Frequency Response	-3 db @ 5 Hz per ISA S26.4.3.1 load configuration A.			
Required Operating Voltages	7.2 VDC @ 20 mA (4-20 mA signal)			
Air Consumption* (per ISA S51.1) SCFH		3.6 (.10 m ³ /HR)	5.5 (.16 m ³ /HR)	5.5 (.16 m ³ /HR)
Accuracy (per ISA S51.1)	0.25% Full Scale Guaranteed 0.15% Full Scale Typical			
Hysteresis & Repeatability (per ISA S51.1)		≤ 0.1% FS	≤ 0.1% FS	≤ 0.1% FS
Position Effect	No Measurable Effect			

*With Natural Gas Media

Supply Pressure Effect on Output

No Measurable Effect

Flow Rate (SCFM)

2.5 (4.25 m³/HR) @ 25 psig, [1.7 BAR, (170 kPa) Supply & 9 psig, [0.6 BAR], (60 kPa) Output.

9.0 (15.3 m³/HR) @ 120 psig, [8.0 BAR, (800 kPa) Supply & 9 psig, [0.6 BAR], (60 kPa) Output.

RFI / EMI Effect

Less than 0.5% of Span @ 30 V/m class 3 Band ABC (20-1000 mHz) per SAMA PMC 33.1 1978 and less than 0.5% of Span @ 10 V/m level, to 2 GHz Band per EN 61000-4-3:1998 +A1 EMC Directive 89/336/EEC European Norms EN 61326

Temperature Range (per ISA S51.1)

-40°F to +160°F, (-40°C to +71.2°C)

Materials of Construction

Body and Housing Chromate Treated Aluminum
Trim Stainless Steel & Zinc Plated Steel
Diaphragm Nitrile
Orifice Aluminum & Sapphire

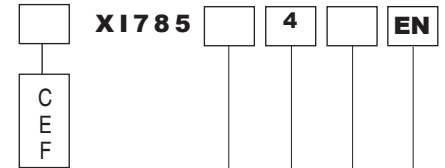
¹ Supply Pressure must be no less than 5 psig, [0.35 BAR], (35 kPa) above minimum output.

² ATEX Approved unit with "N" option 125 psig, [8.5 BAR], (850 kPa) for air or Group IIA Gases.

Catalog Information

Catalog Number T Underwriting Group

Canadian Standard
ATEX
Factory Mutual



Temperature Range

-40°F to +160°F

0

Input

4-20 mA

4

Output

3-15 psig
3-27 psig
6-30 psig

01
02
03

[0.2-1.0 BAR]
[0.2-1.8 BAR]
[0.4-2.0 BAR]

11
12
13

(20-100 kPa)
(20-180 kPa)
(40-200 kPa)

21
22
23

Options

Tapped Exhaust
Natural Gas media approval, Group D gases⁴
(Includes Nipple; TCXI, TEXI, TFXI only)^{1,2}
BSPT Thread³

E
N
U

20 ft cable length⁴ 2
50 ft cable length⁴ 5
100 ft cable length⁴ 0

¹ Not approved for Intrinsically Safe.

² Tapped Exhaust option required.

³ Available for ATEX only. NOT available with "N" Option.

⁴ 10 ft cable standard. Longer lengths available. Contact factory for details and availability.

Installation

For installation instructions, refer to the *Fairchild Model TXI7850 Explosion-proof Electro-pneumatic Transducer Installation, Installation Instructions, II-5TXI7850.*

For operation and maintenance instructions, refer to the *Fairchild Model TXI7850/7851 Explosion-proof Electro-pneumatic Transducer Operation and Maintenance Instructions, OM-5TXI7850.*

O'Keefe Controls Co.

*Specialists in Valves, Controls,
Pneumatics, Fluid Measurement*

